

Monday



ESOL

2:00 (2hr) Discovery Space (Classroom)
(Entry Level 2. Starts 11th January)

English for Speakers of Other Languages



ICT Skills for Life

2:00 (2hr) I.T. Room (Starts 11th January)

An ICT course for beginners.



Progression Coordinator

Drop In

2:00 - 4:00 Resource Area (Starts 11th January)

Housing, work and progression advice.



Brush Up Your Maths

4:00 (2hr) Discovery Space (Classroom)
(Starts 11th January)

Improve your Maths skills.



Job Club

4:00 - 7:00 I.T. Room (Starts 11th January)

Help with CVs, interview skills and job searching.

Tuesday



Football

1:30 (2hr) Outreach Sport Sessions (Starts 12th January)

Play football and join our team.



Aerobics

2:00 (2hr) Inner Space (Performing Arts)
(Starts 12th January)

Improve your fitness.



Art Qualification Level 1- Creative Sketchbooks

2:00 (3hr) Studio (Art Room) (Starts 12th January)

Develop your own sketchbooks.



ICT Entry Level 3

2:00 (3hr) I.T. Room (Starts 12th January.
Workshop 5-6.)

Get an IT qualification



Skills for Work

2:00 (2hr) Discovery Space (Classroom)
(Starts 12th January)

Improve your job prospects



Open Studio

5:00 (1hr) Studio (Art Room) (Starts 12th January)

Draw and paint. Work on projects.

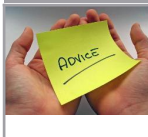


ICT Assessments

6:00 (1hr) I.T. Room (Starts 12th January)

Find out your ICT level and the right course for you for the New Year. Courses start the following week.

Wednesday

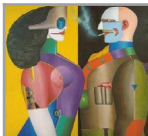


Progression Coordinator

Drop In

1:30 - 3:30 Resource Area (Starts 13th January)

Housing, work and progression advice.



Art Qualification Level 1- Design

2:00 (3hr) Studio (Art Room) (Starts 13th January)

Create a range of designs.



ICT Level 1

2:00 (3hr) I.T. Room (Starts 13th January.
Workshop 5-6.)

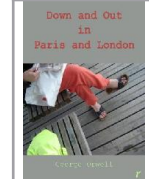
CLAIT. Gain a recognised ICT qualification.



Learning Power

2:00 (2hr) Discovery Space (Classroom)
(Starts 13th January)

Get back into learning, develop yourself and get a qualification.

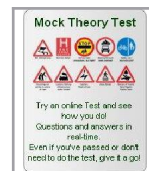


Turning on a Sixpence -

Stage 2

2:00 (2hr) Inner Space (Performing Arts)
(Starts 13th January)

Performance and film project



Driving Theory

5:00 (2hr) Discovery Space (Classroom)
(Starts 13th January)

Prepare for your driving licence theory and improve your English



Open Studio

5:00 (1hr) Studio (Art Room) (Starts 13th January)

Draw and paint. Work on projects.

Thursday



Brush Up Your English

10:00 (2hr) Discovery Space (Classroom)
(Starts 14th January)

Improve your reading, writing and spelling.



ECDL Level 1

10:00 (3hr) I.T. Room (Starts 14th January)

European Computer Driving License (part one)



Fitness and Nutrition

10:00 (2hr) Inner Space (Performing Arts)
(Starts 7th January)

Learn how to take care of your body.



ESOL

12:00 (2hr) Discovery Space (Classroom)
(Entry Level 2. Starts 14th January)

2:00 (2hr) Discovery Space (Classroom)
(Entry Level 1. Starts 7th January)

English for Speakers of Other Languages



Art Qualification Level 1- Drawing

2:00 (3hr) Studio (Art Room) (Starts 14th January)

Develop your drawing techniques



ECDL Level 2

2:00 (3hr) I.T. Room (Starts 14th January)

European Computing Driving License (part two)



Sculpture

2:00 (2hr) Workshop (Basement) (Starts 7th January. New members start 4th February)

Create sculpture with a variety of materials



Table Tennis

4:00 - 6:00 Inner Space (Performing Arts) (Starts 7th January)

Play table tennis

Friday



Digital Photography

10:00 - 12:00 I.T. Room (Starts 15th January)

2:00 - 4:00 I.T. Room (Starts 15th January)

Take digital photographs around Newcastle and manipulate them with Photoshop.

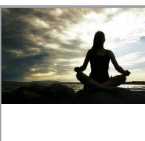


ESOL

10:00 (2hr) Discovery Space (Classroom) (Reading and Writing. Starts 8th January)

12:00 (2hr) Discovery Space (Classroom) (Initial Assessment for new starters)

English for Speakers of Other Languages



Meditation and Yoga

12:00 (2hr) Inner Space (Performing Arts) (Starts 8th January)

Discover the inner you.



Member Newsletter

12:00 - 2:00 I.T. Room (Starts 8th January.)

Create Skylight's newsletter



Art Qualification Level 1- Sampling

2:00 - 5:00 Studio (Art Room) (Starts 15th January)

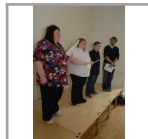
Explore a range of traditional and non-traditional techniques.



Ability Skills

2:00 (2hr) Discovery Space (Classroom) (Starts 15th January)

Learn how to improve your job applications.



Get Singing With Streetwise

2:00 (2hr) Inner Space (Performing Arts) (Starts 8th January)

Singing with Streetwise Opera.



Car Maintenance

4:00 (2hr) Workshop (Basement) (Starts 8th January)

Explore motor vehicle technology.



ICT Skills for Life

4:00 (2hr) I.T. Room (Starts 15th January)

An ICT course for beginners.



Table Tennis

4:00 - 6:00 Inner Space (Performing Arts) (Starts 8th January)

Play table tennis

Saturday



Creative Writing

12:00 (2hr) Discovery Space (Classroom) (Starts 16th January)

Explore how to write creatively.



Language and Culture Group

1:00 (3hr) Inner Space (Performing Arts)

Learn about culture and speak English.

Other Services

Head Injuries Group

Various activities, visits, information and support for people who've had a head injury or are interested. Everyone welcome.

Member Involvement Forum

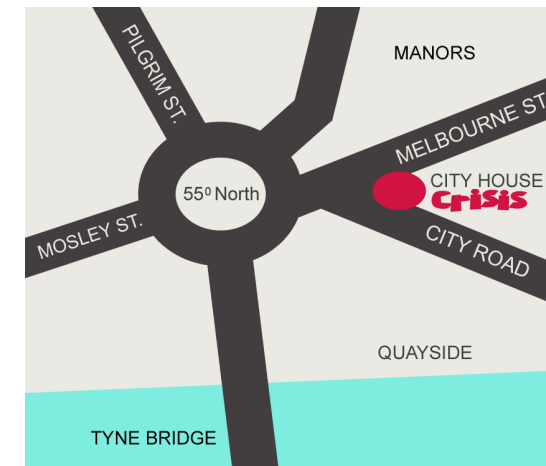
Once a month, days and times vary. Come and have your say about Skylight.



Crisis Skylight Newcastle

New Year Timetable 2010

Crisis Skylight Newcastle
City House,
1 - 3 City Road
Newcastle-upon-Tyne
NE1 2AF
0191 222 0622
www.crisis.org.uk



Key to symbols:



these courses lead to a qualification